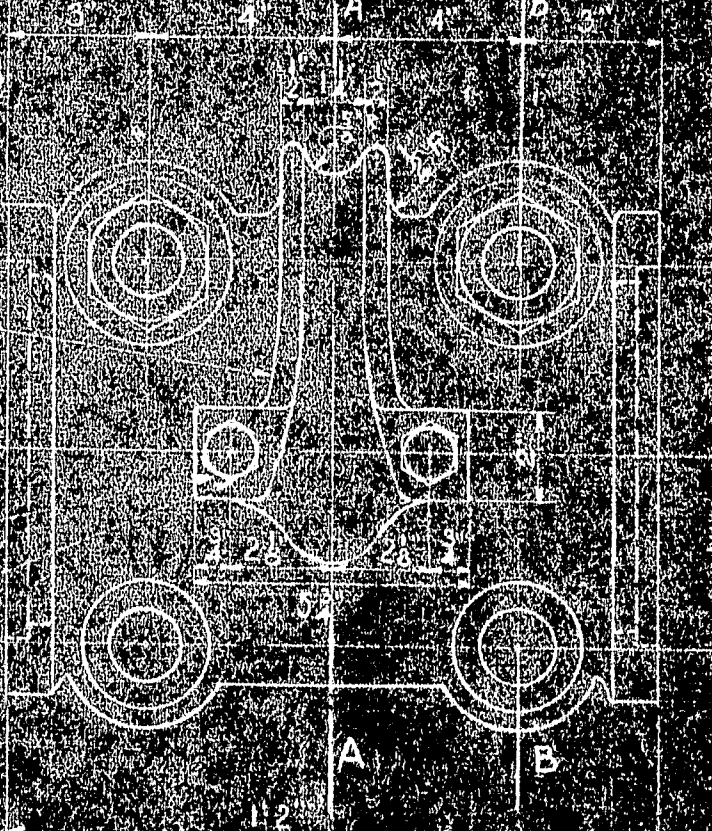
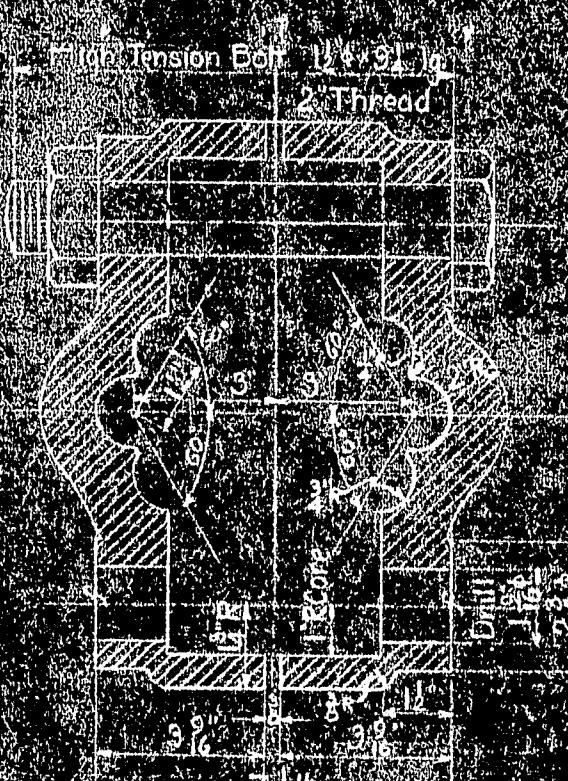


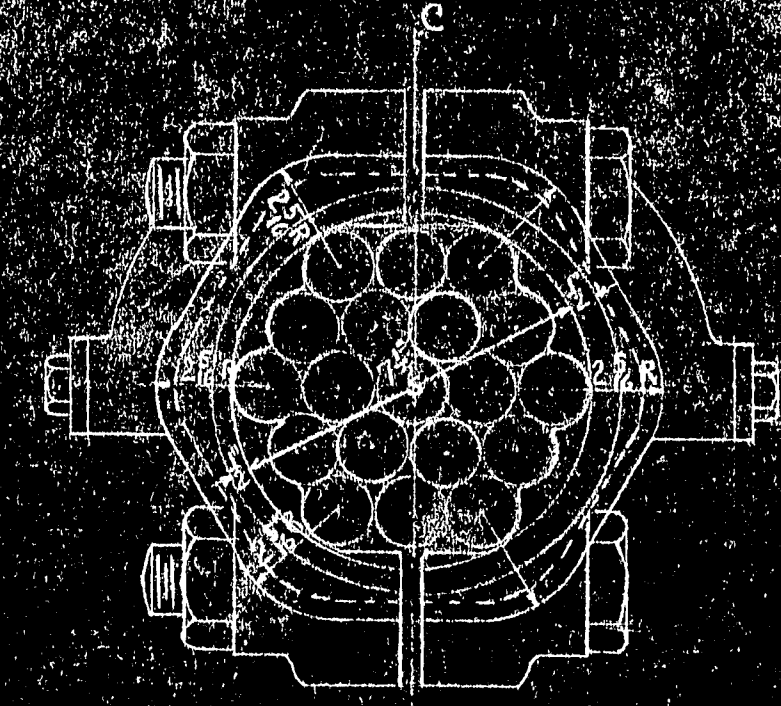
SECTION A-A



SECTION B-B



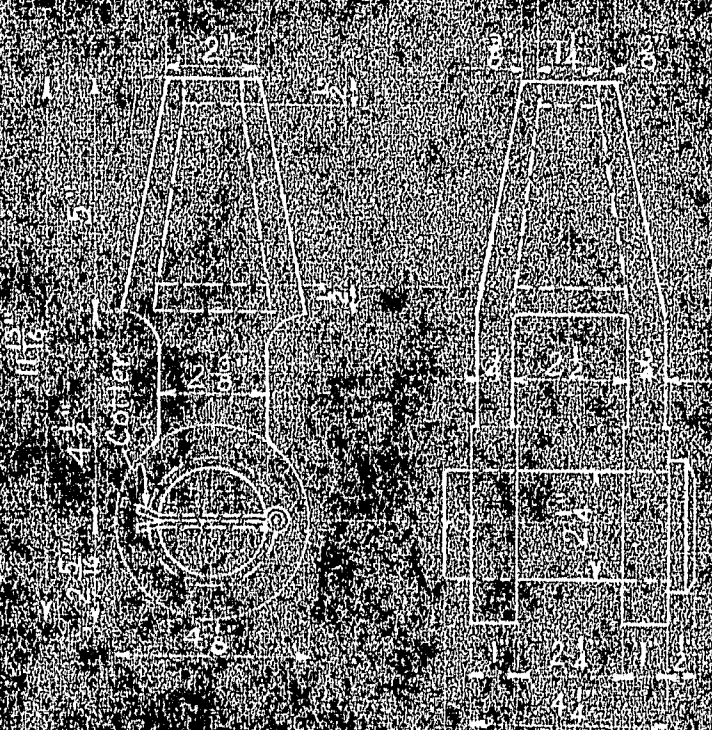
SECTION C-C



END VIEW

QUARTER SECTION OF CABLE

Scale: Full Size



SUSPENDER SOCKET

Scale: 1/2" = 1'-0"

Note: Required: Drop Forged Steel Use zinc only for attaching

WEIGHT OF ONE FORGING INCLUDING PIN = 22# TOTAL FOR BRIDGE = 4072#
 SUSPENDER LENGTH FOR BRIDGE = 15000 L.F.
 WEIGHT OF MAIN CABLE STRAND = 416,000#

- Required:
- 138 Cable Bands completely each consisting of:
 - 2 Identical Castings Cast Steel Annealed
 - 4 1 1/2" Bolts High Tensile Steel
 - 4 1/2" Hex Nuts High Tensile Steel
 - 2 Keeper Pins
 - 4 1/2" Tap Bolts 1" long

Note:
 Suspender groove and inside surface of cable bands to be ground smooth and free from all burrs and irregularities. All openings and joints to be caulked with lead wool.

Note:
 The elevation of cable and roadway given above are for a condition of full dead load and a normal temperature of 50°F. with Main Towers leaning 11" towards anchorages and Cable Bents leaning 1" towards anchorages.

Cables:
 Two Cables are required, each composed of 18 strands of 1 1/2" diameter.

Suspenders:
 138 suspender ropes of 1 1/2" diameter are required, one rope looped over each cable band.
 The cable strands and suspenders will not have to be painted.
 The cable bands and suspender rope sockets shall be painted with three coats of paint as for structural steel.

CABLE BAND

Scale: 3" = 1'-0"

WEIGHT OF ONE CABLE BAND = 206# TOTAL FOR BRIDGE = 28,704#
 WEIGHT OF HIGH TENSION BOLTS = 29# TOTAL FOR BRIDGE = 4002#

SUPERSTRUCTURE	
P.W.A. PROJECT NO. ML 1010 D	
DEER ISLE SEDGWICK BRIDGE DISTRICT	
BRIDGE OVER EGGMOSSIN REACH FROM LITTLE DEER ISLE TO SEDGWICK HANCOCK COUNTY MAINE	
CABLE DETAILS	
STIFFENING GIRDERS AND LATERAL SYSTEM	
ROBINSON AND STEINMAN	SCALE: AS NOTED
ENGINEERS	DRAWING NUMBER
NEW YORK CITY	RS 3310 - 3105
	SEPTEMBER 4, 1937

